

BMW K1200LT

OEM Flasher modification for LED turn signals.

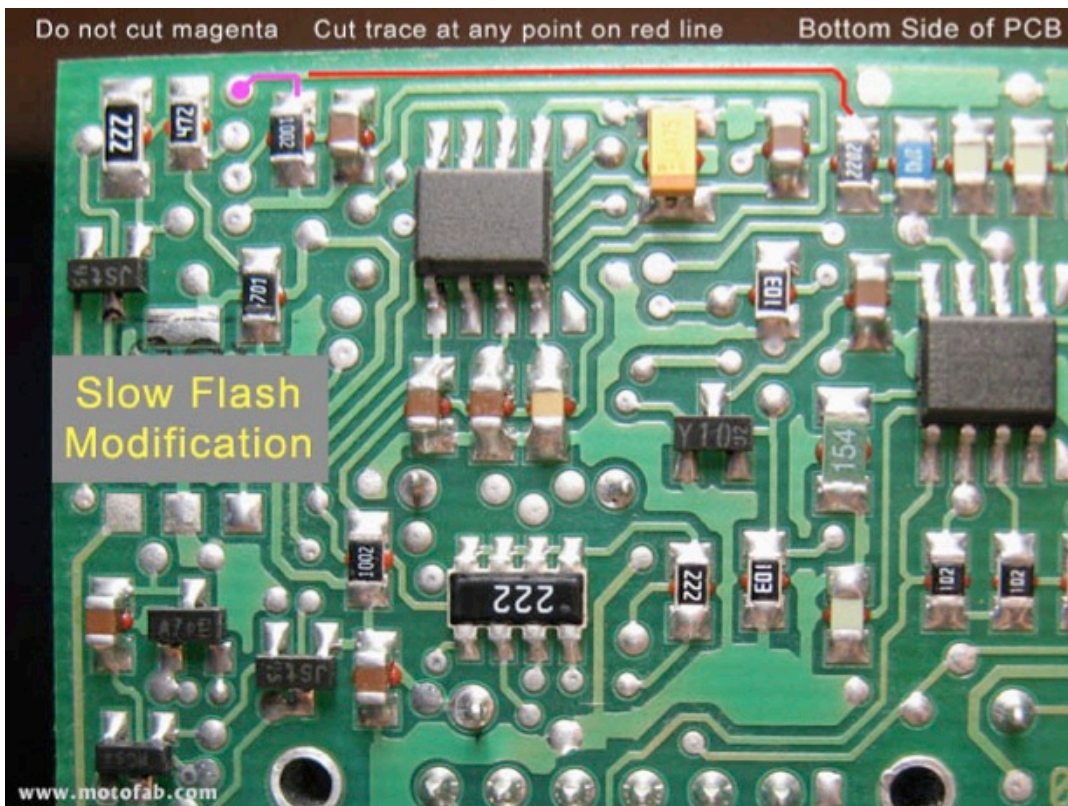
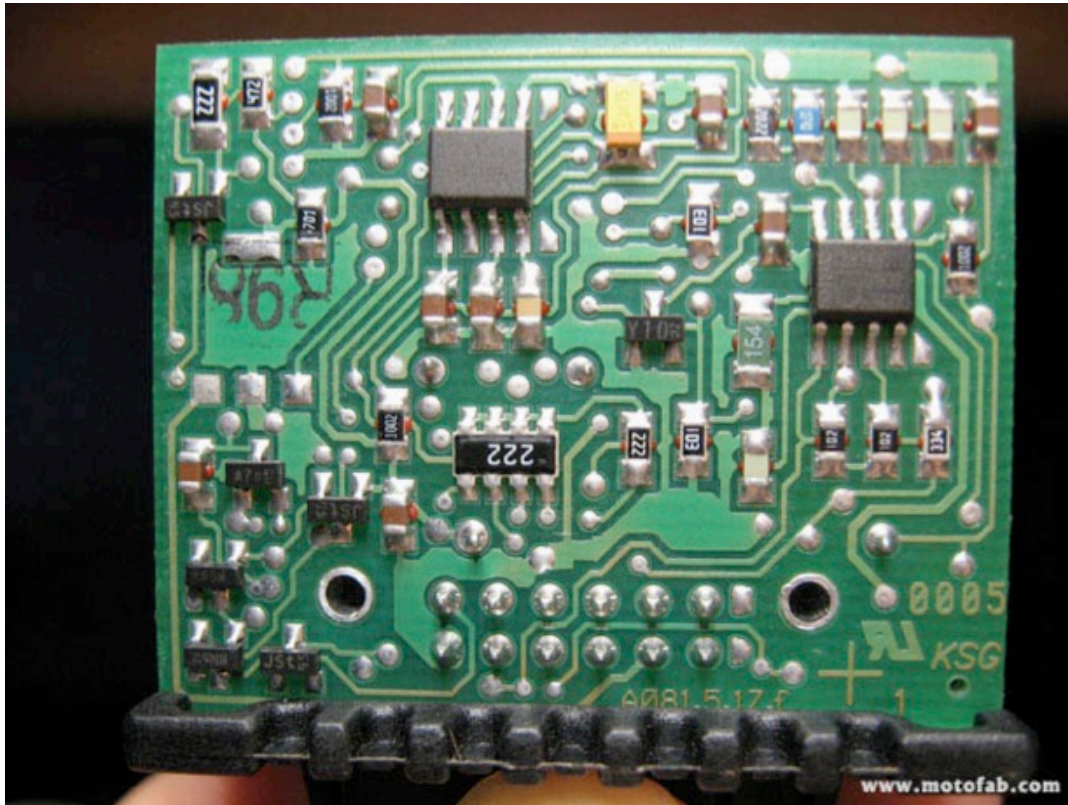
The flasher is located in the electronics box under the gas tank on the LT.

I found the top few pictures out on the net. Once I got my flasher out, I found that it was not the same as either of these samples. With a bit of circuit tracing, I was able to find the correct point to cut a trace to make the flashers run at the correct rate again.

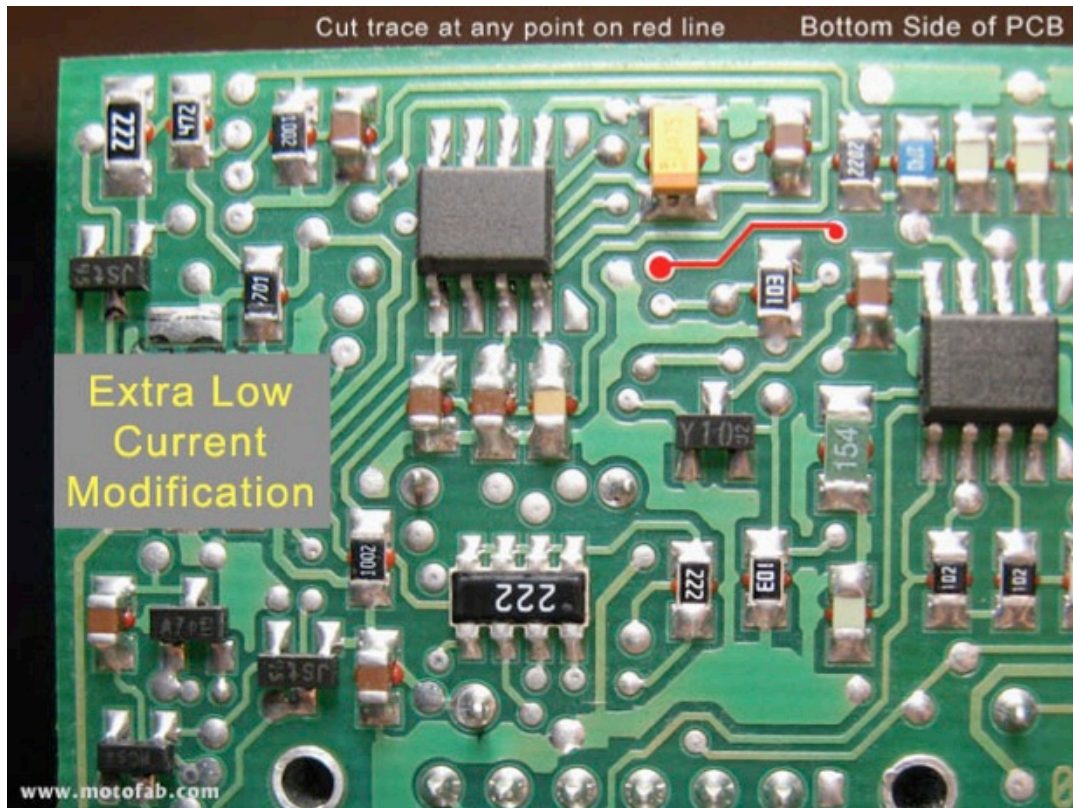
Information gathered and put together for you by:
Terry Steeper

I am sure that this same flasher is used in other models of BMW bikes,
but I do not know which ones.

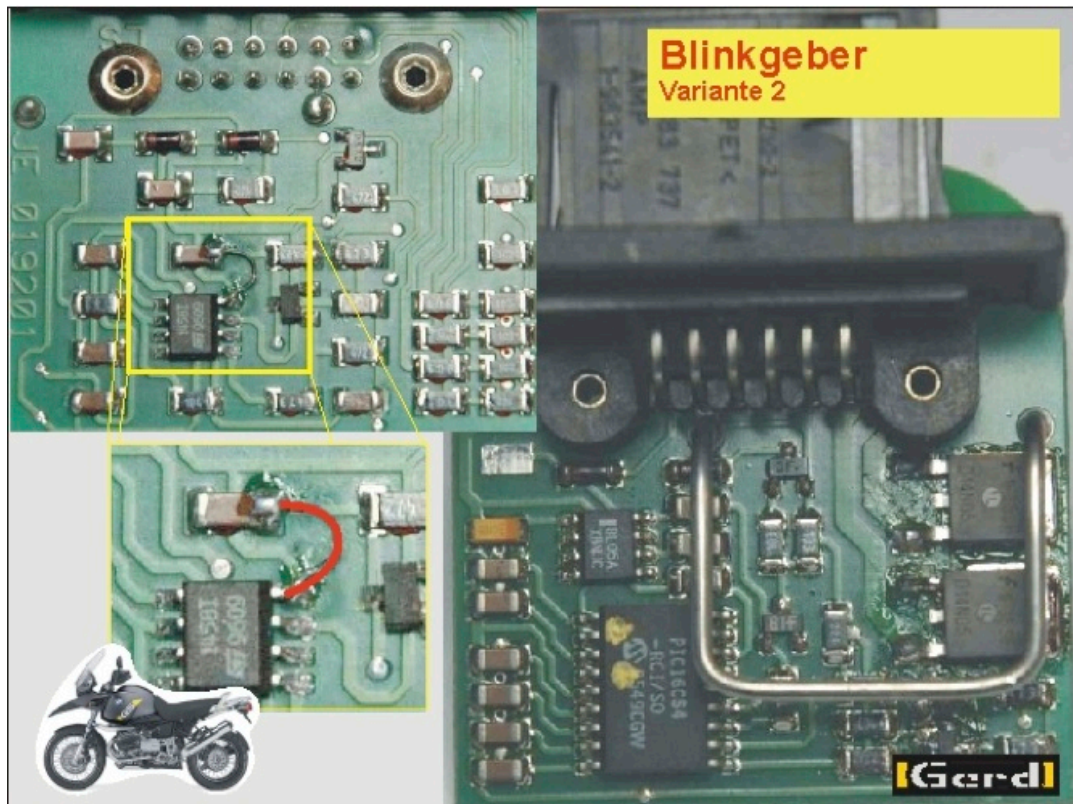
The back of the turn signal flasher module.



Cut red trace if your LED lamps draw less then 0.5Amps



In the older version of the flasher, solder in a small wire as shown in the blowup of the yellow box. Solder the wire where the red line is.



In my 2006 version, cut the trace as shown.
In between the two chip resistors as marked below:

